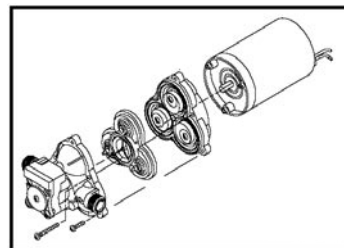




## Pressure Pump

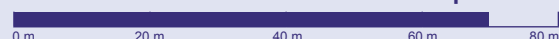


## 8000 – Series

8000-12, 8000-24

Pressure Head

up to 69 m

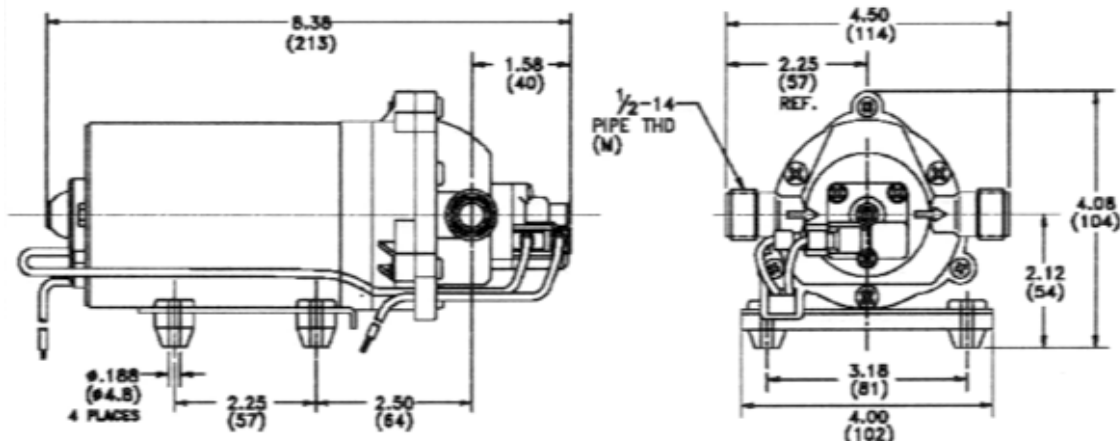


The 8000 series is ideal for the toughest industrial applications requiring high pressure with moderate flow rates (up to 6 ltr./min.) with low amp draw. It is also widely used in home and RV systems for portable water pressure or transfer.

The 8000 is a positive displacement 3-chamber diaphragm pump, with a permanent magnet motor. Max. liquid temperature is 82°C. Self-priming up to 3.0 m. The ports are standard 3/8" NPT female pipe thread. Pressure up to 60 psi, with built in automatic demand adjustable pressure switch. 4.2 to 7.2 amps, depending on pressure.

### Features

- Self priming up to 3 m
- Flow Rates up to 6 ltr./min.
- Pressures up to 6.9 bar
- Automatic Demand
- Choice of Materials
- Available for 12 or 24 Volt DC



SH-No.:	160020	160021
<b>Pressure Pump</b>	<b>8000-12</b>	<b>8000-24</b>
pump design	3 chamber diaphragm pump	
cam	2.0 degree	
nominal input voltage (V)	12	24
current (A)	3.0 to 8.0	
flow rates	up to 6 ltr./min	
pressure head	up to 69 meters	
self priming	up to 3 meters	
ports	3/8" female	
weight	2.07 kg	
dimensions (mm)	213 x 114 x 104	