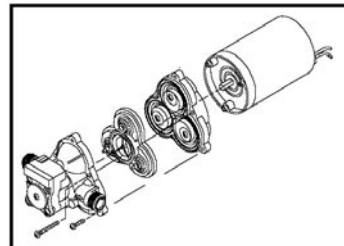




Pressure Pump



## 2088 – Series

2088-12, 2088-24

Pressure Head

up to 28 m



The 2088 series pumps are considered the workhorse of the small diaphragm pumps. They are used in a variety of transfer and dispense-on-demand applications where flow up to 10,6 ltr. per minute is required. Applications include RV's, remote homes and cabins, and marine. These pumps are not designed for continuous heavy duty use. Dry work possible until max. 1 hour.

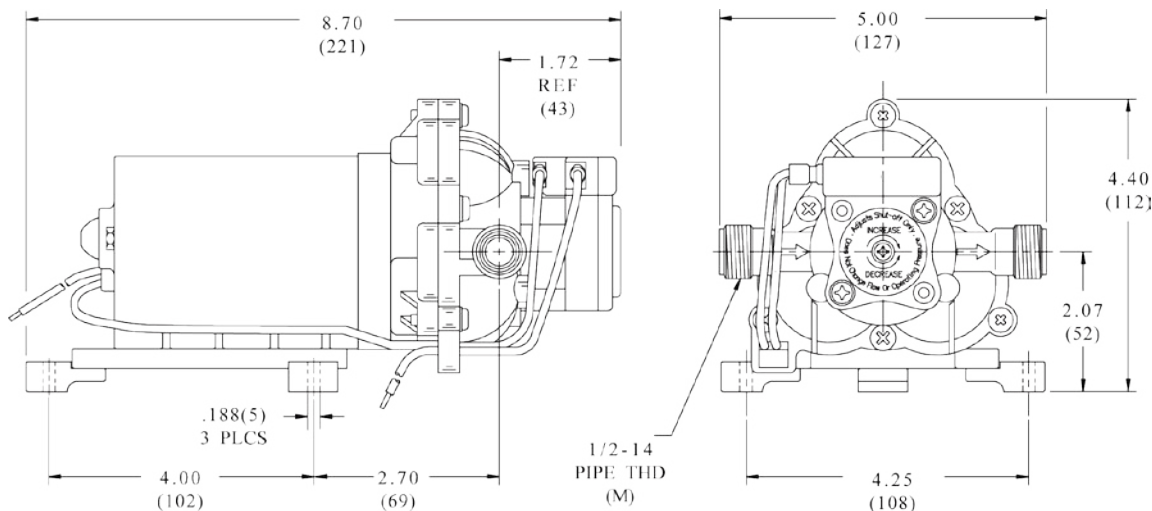
Delivery pump, 12 / 24 VDC, 10,6 ltr./min. open flow. Pressure Switch: Adjustable from 30 - 50 psi, Factory Set 45 psi. Santoprene valves and diaphragm. 1/2" male straight (not tapered) pipe thread ports. Self Priming up to 2.1 m vertical.

### Features

- Self priming up to 2.1 m
- Flow Rates up to 10.6 ltr./min.
- Pressures up to 2.8 bar
- Automatic Demand
- Choice of Materials
- Available for 12 or 24 Volt DC

### Options

- In-Line Strainer



SH-No.:	160000	160001
<b>Pressure Pump</b>	<b>2088-12</b>	<b>2088-24</b>
pump design	3 chamber diaphragm pump	
cam	3.5 degree	
nominal input voltage (V)	12	24
current (A)	3.1 to 4.6	
flow rates	up to 10.6 ltr./min	
pressure head	up to 28 meters	
self priming	up to 2.1 meters	
ports	1/2" – 14 male parallel thread	
weight	1.68 kg	
dimensions (mm)	221 x 127 x 112	